

# Hadrian Primary School



## Returning to School

March 2021

Revised March 2021

Dear Parents and Carers,

We are looking forward to welcoming your child back to Hadrian following the national lockdown over the winter months. It has been such a challenging period for everyone and I know we all want to begin to move forward.

Having the children come back into school is a positive step, because it means we can begin to get back to some sort of normality.

We know that there might be some children who will have worries about coming back to school; about the virus and the impact that it could have on them and their family. When your child comes back to school, **we will help** them and we will be here to support them.

In September, we made a number of changes to the way we worked in school during the autumn term. These changes will stay in place during the remainder of the spring term. If and when things change later, we will again write to you. The guidance in this booklet is aimed to help make the return to school on **8<sup>th</sup> March** as smooth as possible for everyone. **Please be aware that ALL children will be expected to return to school on this date.**

Further information is available on the school website [www.hadrianprimary.org](http://www.hadrianprimary.org)



## Attendance

All pupils **MUST** return to school on **Monday 8<sup>th</sup> March** following the national lockdown restrictions being eased. **School attendance is mandatory and our normal attendance policy will apply from this date.**

Pupils who have coronavirus (COVID-19) symptoms, or who have someone in their household who does, **MUST NOT** attend school. Any pupil who becomes unwell in school with symptoms of coronavirus (COVID-19) will be sent home and parents/carers will be advised to follow the 'stay at home: guidance for households with possible or confirmed coronavirus (COVID-19) infection (<https://www.gov.uk/government/publications/covid-19-stay-at-home-guidance>).

Where a pupil is unable to attend school due to either themselves or their parents/carers following clinical and/or public health advice, absences will not be penalised. Parents/carers must provide written medical evidence if this is the case.

## Your Child Entering and Exiting the School

Each class will be a bubble. Each bubble will enter and exit the premises at staggered times.

The return to spring term will begin with staggered pick up and drop off times. This will be reviewed continually throughout the term and parents will be informed of any changes to arrangements in advance. These measures are necessary to ensure social distancing is adhered to as much as possible on the school site and that there is as limited contact between bubbles. As of **Monday 8<sup>th</sup> March**, arrangements will be as follows:

Nursery times will be:

**Drop off 8.45am – Collection between 11.00am/11.15am &**

**Drop off 12.30pm – Collection between 3.00pm/3.15pm**

Class	Drop off	Pick up
Miss Pattison (Y6) Mrs Giles (Y5/6) Miss Dickson (Y5)	8.45am	3.30pm
Mrs Shaw (Reception) Miss Ridley	9.00am	3.00pm

<b>(Reception)</b>		
<b>Mrs Fox (Y1)</b> <b>Miss Christie (Y2)</b>	<b>9.00am</b>	<b>3.00pm</b>
<b>Miss Pippin / Miss Goodall (Y3)</b> <b>Mr Webster (Y3/4)</b> <b>Mrs Hunter (Y4)</b>	<b>9.15am</b>	<b>3.15pm</b>

The children will be greeted on the yard at their allotted time by a member of staff who is allocated to their bubble.

Parents should continue to spend as little time as possible on the school premises. Appropriate signage is in place outside the school gates for parents/carers to observe social distancing when dropping off/ collecting pupils. We ask that parents/carers **do not** gather at the school gates and leave the yard promptly. **Please always maintain social distancing.**



## Good Hygiene Practices

When your child comes into school, they will use hand sanitiser on entering the classroom. They will have the opportunity throughout the day to wash their hands thoroughly.

Please remind your child how to wash their hands carefully. There are lots of videos on the internet that can make this fun.

Hand sanitiser is available in every classroom and is used as necessary across the school at cleaning stations.

Pupils will be monitored and supported as necessary to ensure they are carrying out regular hand washing throughout the day. Pupils will be encouraged not to touch their face, eyes, nose or mouth.

We have bins in all classrooms to control the spread of germs and viruses. Your child will be expected to use these bins during the day to discard any used tissues ('catch it, bin it, kill it').



## General Cleaning

Work areas will continue to be kept clean and bins for tissues will be emptied regularly throughout the day.

Areas and surfaces will be kept clear and tidy as much as possible to enable effective cleaning to be carried out throughout the day.

Shared areas, such as the ICT room, that are used by different bubbles are cleaned between groups.

Resources / equipment shared within a bubble are cleaned regularly or left unused for 72 hours between use.

Frequently touched areas, e.g. tables, chairs, door handles, light switches will be cleaned at regular intervals, throughout the day.



## Classrooms

Each class operates as a separate group/bubble and avoids contact with other bubbles, wherever possible.



Pupils will be designated their own area within the classroom and will be encouraged to **stay at their table** when they are working in class. Pupils in the majority of Key Stage One and Two classes will sit side by side/facing forwards and will avoid face to face seating arrangements wherever possible.



Classrooms will appear bare as all soft furnishings have been removed.

Resources and equipment will be cleaned after use and pupils will be allocated their own stationery to use.

There will be lessons outside of the classroom, on the yard or field, at different times throughout the day.

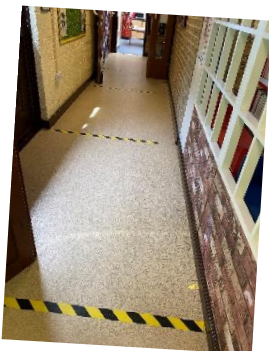
Children will be allocated regular comfort break times, avoiding mixing with other bubbles.

## Walking around school

There will be fewer children moving around the school because of different break, lunch times and allocated comfort breaks.

In school we will all walk on the left-hand side of the corridors and follow the signs.

When we pass people, we will smile and say hello but keep our distance and walk past.



## Food and Drink



Your child will be able to use their school water bottle. This will be filled up by staff each day. Your child will not be able to drink from the water fountains in order to control the spread of the virus.

Lunches will be provided for all pupils in Reception and Key Stage One. Key Stage Two pupils who are entitled to free school meal will be provided with a school lunch. Lunches can be purchased for the normal price of £2.20 via Parentpay or your child can bring a packed lunch or go home for lunch. If a child brings a packed lunch, a drink can be included with this for lunchtime only.

Pupils will have their lunch in their bubble, within the school hall. There will be a thorough cleaning of the hall between lunches.

## What to wear and bring with you



Children should wear normal school uniform, including appropriate school shoes and hair styles that must not include shaved heads; shaved lines or patterns; hair dye or highlights; or mohicans. Children with pierced ears should only wear plain studs.

We know it is safer to be outside in the sunlight and fresh air. Please make sure that your child is wearing strong protective sun cream when they come to school as we get into the warmer months. They should also bring a sun hat and a warm coat.



We need to limit children bringing items in from home. As in the autumn term, children will not need a bag, as apart from their PE kit, everything will be provided for them. Infant children can continue to use book bags to carry reading books to and from school. Most infants already have these. However, if your child does not have one, you do not need to go out and buy one specifically. Reading books can be carried home individually.

## Home/School Contact

If you need to speak with a member of staff then this can be arranged by contacting the school office via the phone: 0191 4554514 or by email [info@hadrian.s-tyneside.sch.uk](mailto:info@hadrian.s-tyneside.sch.uk). Coming on to school site without an appointment is not allowed.

**It is very important that we can get in touch with you during the day. You must ensure you have provided up to date contact details to school.**

## **Transport to and from School**

Please try to avoid public transport when coming to and from school, walk or cycle whenever possible. Further information can be found at [www.southtyneside.gov.uk/schooltravel](http://www.southtyneside.gov.uk/schooltravel)



## **Playtimes and Lunchtimes**

As part of our risk assessments, we will continue to work in 'bubbles'. Children from one bubble will not be allowed to play with children from another bubble. We are lucky to have lots of yard space and a large field. Some bubbles may be outside at the same time, but it is important that your child knows to stay in her/his own group.



## **Special Educational Needs**

We will always endeavour to meet the needs of every individual pupil. Children who need additional support, staff will make reasonable adjustments; put a plan in place to be followed and review regularly. We will continue to work with the local authority, engaging the support of other professional services.

## **Outside Agencies**

From September, outside agencies will be allowed to work in schools again. This may include things like, sports development and Bikeability.

## **Equipment**

Children will be provided with all of the equipment they need to work in classrooms. On a day to day basis, they will not need to bring anything into school other than PE kit and or a packed lunch if required.



# Behaviour Expectations



Temporary Changes have been made to the School Behaviour Policy during coronavirus COVID-19 pandemic. Please checkout the amended School Behaviour Policy on our School Website ([www.hadrianprimary.org](http://www.hadrianprimary.org)). Below is listed the key changes to the policy:

- The altered routines for both arrival and departure of children must be adhered to. Parents must cooperate with the specified times and locations for drop off and pick up times, ensuring that social distancing measures are followed.
- Pupils must ensure that they follow the school instructions on hygiene e.g. handwashing and sanitising.
- Pupils must ensure they use a tissue to wipe their nose or when they sneeze or cough. Tissues will be provided. Tissues must be discarded in the bins provided and then hands must be washed for at least 20 seconds.
- Pupils must stay in their allocated bubble and avoid communicating and socialising with children from other bubbles.
- Pupils must follow changes to movement around school.
- Pupils must tell an adult if they are feeling unwell. If the child is showing symptoms of the coronavirus parents/carers will be contacted and asked to collect their child and follow the government procedures.
- Pupils must bring their water bottles to school. They must not share the drinking bottle/vessel with other children.
- Pupils must ask permission from an adult to go to the toilet. They should not enter if children from another bubble are using the toilets. After using the toilet, they must wash their hands thoroughly for at least 20 seconds with warm water.
- Pupils must adhere to the School Uniform Policy.
- Any spitting is strictly forbidden. Should a child spit at another pupil or on the ground an investigation will be carried out. This may result in an exclusion.

Children will continue to be rewarded and praised for adhering to these new and difficult rules. The Good to be Green system will continue to be used across the school. We will continue to maintain high standards and expectations of behaviour throughout the school at all times.

# COVID-19 Home School Agreement

## February 2021

Please read through our updated COVID-19 Home/School Agreement for pupils returning to school. It is necessary to update this agreement in line with the government and Department for Education guidance. Please ensure that your child, and anyone bringing or collecting your child, is also aware of the agreement.



## School will:

- Provide an environment which has been risk assessed in response to the COVID-19 infection.
- Promote the government's guidance in an age appropriate way with the children.
- Have regular, stringent cleaning procedures in place.
- Organise the staff and children into 'bubbles' to reduce the possibility of contact between different groups of children and adults.
- Educate children in the new expectations around school.
- Inform parents when children are struggling to manage the new expectations.
- Contact parents/carers if a child displays symptoms of COVID-19, or if there is a confirmed case within a 'bubble'.
- Take swift action if we become aware that someone who attended school has tested positive for coronavirus (COVID-19). We will contact the health protection team and follow their definitive advice.
- Provide a broad and balanced high-quality curriculum, that promotes their development and prepares them for the future.
- Where needed, provide remote education that reflect in-school provision.
- Record your child attendance and follow up any absence in line with government policy.
- Communicate between home and school through email, text, School Facebook page and the school website.



## Parents agree to:

- Ensure that your child attends regularly at school.
- Will cooperate with the specified times and locations for drop off and pick up times, ensuring that social distancing measures are followed at all times.
- Self-isolate as a family for 10 days if anyone in my household shows symptoms of COVID-19. I will get them tested and I will let the school know as soon as possible via telephone. (Tests can be booked online through the NHS testing and tracing for coronavirus website: <https://www.nhs.uk/conditions/coronavirus-covid-19/testing-for-coronavirus/>).
- Collect my child from school immediately if my child shows symptoms of COVID-19.
- Prepare my child for the return to school including discussing the changes to their routine.
- Understand that school **will not** be able to maintain social distancing.
- Adhere to routines for arrival and departure i.e. 1 adult only, remain 2m apart, 'drop and go' at handover and collection.
- Support the school in the behaviour policy put in place.
- Maintain contact with school over the phone or by email.
- **Provide up to date contact details that will be answered.**
- Ensure that my child is adhering to the school uniform policy.
- Ensure my child does not bring any items from home such as mobile phones, toys, pencil cases, etc.

## Pupils will:

- Understand that things will be different in school and recognise that they will not be able to do all the things they used to do in school.
- Tell an adult if they feel unwell.
- Follow new routines for arriving and leaving school.
- Follow new school instructions on staying clean and healthy, such as hand washing and sanitising.
- Only use the equipment given to me by school.
- Stay in their assigned 'bubble' group in the allocated areas both in the classrooms and outside on the playground.
- Follow all rules in the behaviour policy set out to support the safety of themselves and others.
- Behave well at all times.
- Engage with all learning set within this new environment.

Head Teacher:



Date: February 2021